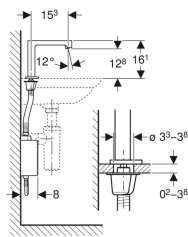
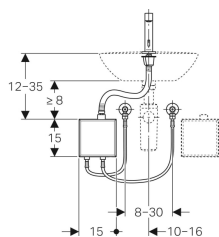


Geberit washbasin tap Brenta, deck-mounted, mains operation, with exposed function box



Application purposes

- For installation in washbasins or washtops
- For connecting cold and hot water (only for model with mixer or thermostatic mixer)
- For connecting cold or mixed water (only for model without mixer)
- For use with stainless steel bowls
- Model with mixer or thermostatic mixer not suitable for continuous flow heater, see technical data sheet "Washbasin taps with continuous flow heaters"

Characteristics

- Tap group I in accordance with DIN 4109
- Infrared user detection
- Vandal-resistant
- Temperature presetting via mixer (only for models with mixer or thermostatic mixer)
- Not possible to set just hot water or just cold water (only for model with mixer or thermostatic mixer)
- Thermostat according to EN 1111 (only for model with thermostatic mixer)
- Scald protection by limiting the water temperature to 42 °C (only for models with thermostatic mixer)
- Thermal disinfection according to DVGW W 551 possible
- Functions can be set and queried with the Geberit Service Handy
- With integrated check valve
- Functional unit with built-in basket filters

Technical data

Protection degree	IPX4
Nominal voltage	110-240 V AC
Mains frequency	50-60 Hz
Operating voltage	4.5 V DC
Power consumption	0.1 W
Cable length	1 m
Operating pressure	0.5-10 bar
Recommended operating pressure with thermostatic mixer	0.5-5 bar
Recommended operating pressure with thermostatic mixer	50-500 kPa
Differentiated pressure CW/WW	≤ 1.5 bar
Maximum test pressure, water	16 bar
Maximum test pressure, air / inert gas	3 bar
Ambient temperature	1-40 °C
Storage temperature	-20 - +70 °C
Water temperature, adjustment range with thermostatic mixer	20-42 °C
Maximum operating temperature, water, short-term	90 °C
Flow rate at 3 bar	5 l/min
Interval flush time, factory setting	5 s
Product material	Brass chrome-plated / plastic

Scope of delivery

- Washbasin tap with IR sensor and connection hose
- Exposed function box with control electronics, functional unit and power supply unit
- Reinforced braided hoses 3/8"
- Tap aerator key
- Fastening material

Art. no.	Colour / surface	Mixer	Plug type
116.171.21.1	bright chrome-plated	without mixer	CEE 7/16
116.172.21.1	bright chrome-plated	with mixer	CEE 7/16
116.177.21.1	bright chrome-plated	with thermostatic mixer	CEE 7/16